

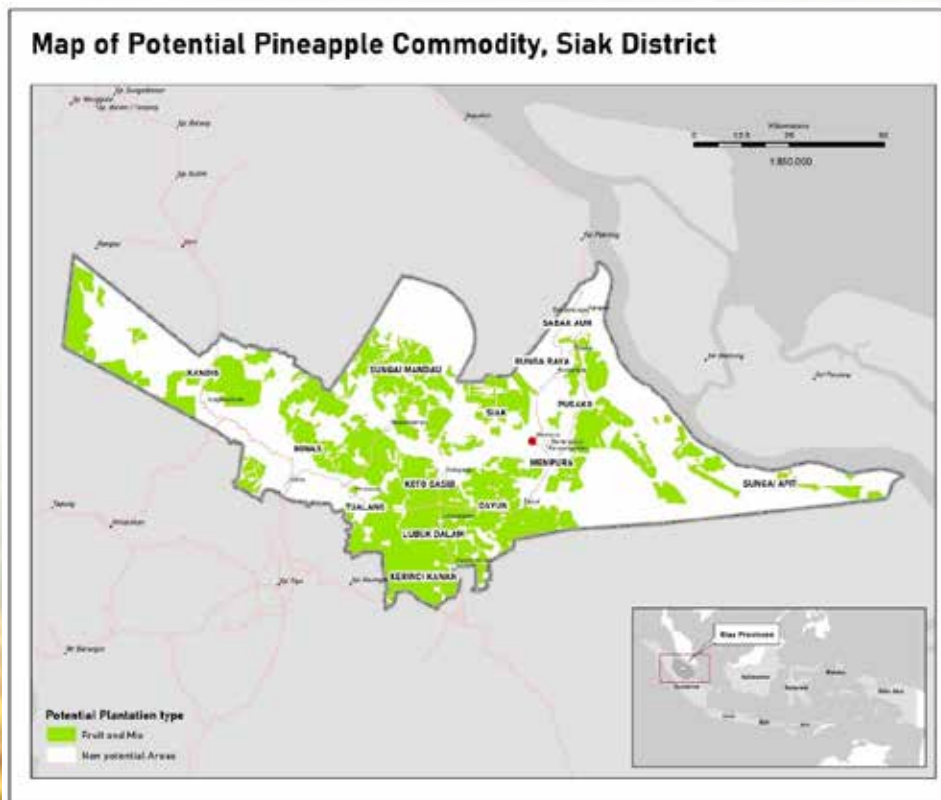
SUSTAINABLE PEAT MANAGEMENT THROUGH PEAT-FRIENDLY COMMODITIES: PINEAPPLE

OVERVIEW

The local commodity that many people in Siak grow on peatlands is pineapple. Improving peatland management and water management in pineapple cultivation will support improving the quality of peatlands and reduce the potential for land fires that often occur during the dry season.

An upstream-downstream approach is used in the implementation of this initiative. In upstream areas, assistance is provided for agricultural cultivation practices, water management improvements, and capacity building for farmers and Village-Owned Enterprises (BUMKam) which will become the village's economic center and partner with external parties. In the downstream area, new market access is opened by producing and marketing pineapple derivative products.

The main activities are assisting and developing centers of excellence within the project area in collaboration with relevant government agencies; facilitating collaboration between BUMKam and the private sector in the production and marketing of peat-friendly local commodity products; and developing alternative peat-friendly commodities as community livelihoods by encouraging paludiculture and hydrological practices.





Program Information

- Cultivated area: 1,400 hectares.
- Productivity: 2,300 tons/year.
- Number of cultivators: 100 farmers.



Social and Environmental Impact to be Achieved

- Providing jobs for 100 farmers.
- Reducing deforestation rate of 2.5 percent.
- Ensuring average water level on peatlands 40 cm.



Governance

Winrock International in collaboration with Village-Owned Enterprises (BUMKam), Badan Restorasi Gambut dan Mangrove (BRGM), related government agencies, and universities.



Development Opportunities

- Increasing diversification of business units under the center of excellence to a minimum of 2 types of businesses by 2024.
- Increasing community capacity for the cultivation of alternative peat-friendly commodities and water management in a minimum land area of 1,300 hectares by 2024.
- Increasing the number of villages that practice peat-friendly commodity cultivation supported by market research to 10 villages by 2024.



Investment Opportunity USD 1,000,000 for 5 Years

Source: Petani nanas Siak kebanjiran pesanan saat pandemi [riau.antaranews.com, 2020]