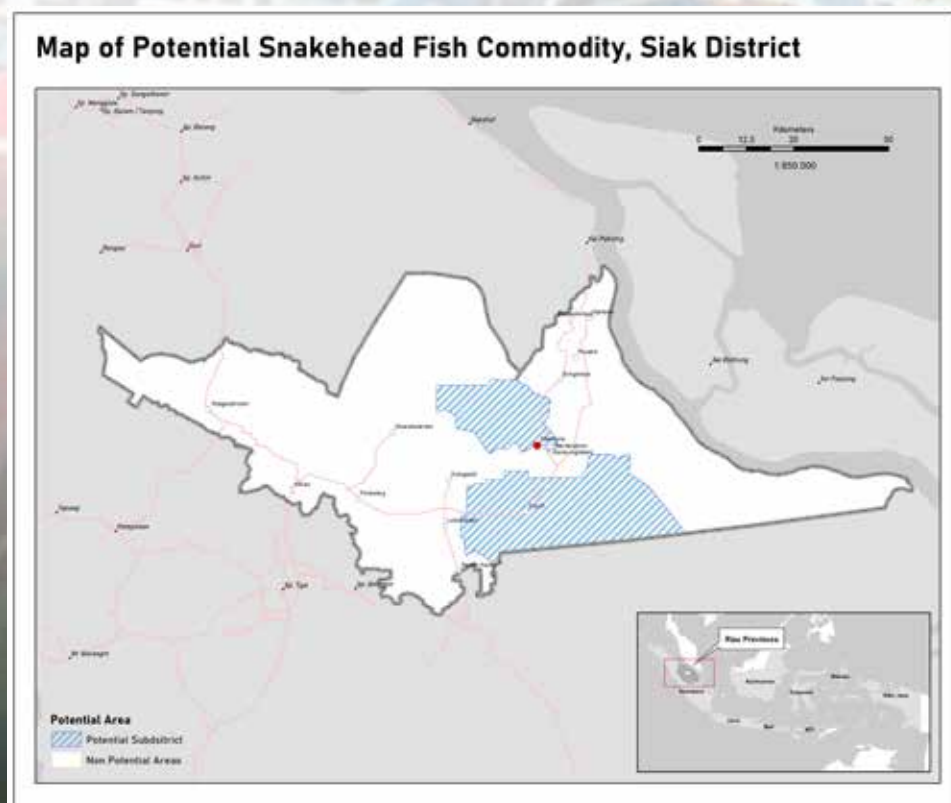


SUSTAINABLE PEAT MANAGEMENT THROUGH PEAT-FRIENDLY COMMODITIES: SNAKEHEAD FISH

OVERVIEW

Cultivation of snakehead fish on peatlands is the right choice to keep peatlands wet. This type of fish lives in peat waters and has a high survival rate. In local tradition, snakehead fish is processed into food that can be useful for wound healing and contains high albumin and protein which can overcome various diseases in the human body.

The main activities of the program are researching and creating products made from natural raw materials that directly improve the community's economy by considering the principles of environmental protection; mapping areas to regulate cultivation patterns and expand cultivation areas so that snakehead fish stocks can be managed properly according to the specified schedule for production; and organizing a field school for corm fish cultivation.





Program Information

- Cultivated area: 5 hectares.
- Productivity: 12 tons/year.
- Number of cultivators: 35 farmers.



Social and Environmental Impact to be Achieved

- Providing jobs for 350 farmers.
- Reducing deforestation rate of 6.2 percent.
- Ensuring average water level on peatlands 40 cm.



Governance

PT Alam Siak Lestari conducts research and production, PT Agrapana Damayanti Biotek assists the technical laboratory and PT Tanah Air Lestari provides capital. Meanwhile, the Siak Regency Government support this program by providing fish cages and fry through the One Village One Product (OVOP) development program and Ecology-Based Regional Budget Transfer (TAKE).



Development Opportunities

Developing market research for new product opportunities and other derivatives (excluding snakehead fish) which will provide 500 jobs for employees and farmers by the end of 2027.



Investment Opportunity

USD 2,000,000 for 5 Years

Source: Budidaya Ikan Gabus Siak, Sulap Lahan Gambut Jadi Produktif [liputan6.com, 2021]